

Public Document Pack

Gareth Owens LL.B Barrister/Bargyfreithiwr
Head of Legal and Democratic Services
Pennaeth Gwasanaethau Cyfreithiol a Democraataidd



To: Cllr Brian Dunn (Chairman)

CS/NG

Councillors: Ron Davies, Glenys Diskin,
Chris Dolphin, Ian Dunbar, Robin Guest,
Ron Hampson, Brian Lloyd, Dave Mackie,
Mike Reece, Tony Sharps, Paul Shotton,
Ian Smith, Nigel Steele-Mortimer and
David Williams

19 July 2013

Maureen Potter 01352 702322
maureen.potter@flintshire.gov.uk

Dear Sir / Madam

A meeting of the **COMMUNITY PROFILE & PARTNERSHIPS OVERVIEW & SCRUTINY COMMITTEE** will be held in the **DELYN COMMITTEE ROOM, COUNTY HALL, MOLD CH7 6NA** on **THURSDAY, 25TH JULY, 2013** at **10.00 AM** to consider the following items.

Yours faithfully

Democracy & Governance Manager

A G E N D A

- 1 **APOLOGIES**
- 2 **DECLARATIONS ON INTEREST (INCLUDING WHIPPING DECLARATIONS)**
- 3 **MINUTES** (Pages 1 - 10)
To confirm as a correct record the minutes of the last meeting.

County Hall, Mold. CH7 6NA
Tel. 01352 702400 DX 708591 Mold 4
www.flintshire.gov.uk
Neuadd y Sir, Yr Wyddgrug. CH7 6NR
Ffôn 01352 702400 DX 708591 Mold 4
www.siryfflint.gov.uk

The Council welcomes correspondence in Welsh or English
Mae'r Cyngor yn croesawau gohebiaeth yn y Cymraeg neu'r Saesneg

- 4 **ANNUAL COMMUNITY SAFETY PARTNERSHIP UPDATE** (Pages 11 - 68)
Report of Director of Environment

- 5 **FORWARD WORK PROGRAMME** (Pages 69 - 76)
Report of Member Engagement Manager

**COMMUNITY PROFILE AND PARTNERSHIPS
OVERVIEW AND SCRUTINY COMMITTEE**
24 JUNE 2013

Minutes of the meeting of the Community Profile and Partnerships Overview and Scrutiny Committee of the Flintshire County Council held at County Hall, Mold on Monday, 24 June 2013.

PRESENT: Councillor B. Dunn (Chairman)

Councillors: R. Davies, A.I. Dunbar, R.J.T. Guest, B. Lloyd, D.I. Mackie, M.A. Reece, W.P. Shotton, I.R. Smith and N.R. Steele-Mortimer

SUBSTITUTIONS: Councillor N.M Matthews for C.J. Dolphin, and C.A. Thomas for D.T.M. Williams

APOLOGIES: Councillor A.P. Shotton

ALSO PRESENT: Councillor P.G. Heesom

CONTRIBUTORS: Chief Executive, Professor P. Heard, Pro Vice-Chancellor (Research), Glyndwr University (for minute No.4), and the Policy Performance and Partnerships Manager

ATTENDANCE:

Member Engagement Manager and Committee Officer

1. DECLARATIONS OF INTEREST

No declarations of interest were made.

2. APPOINTMENT OF VICE CHAIR

The Chairman sought nominations for a Vice-Chairman for the Committee.

Councillor D.I. Mackie proposed that Councillor R.J.T. Guest be appointed Vice-Chair of the Committee. The proposal was seconded and when put to the vote Councillor Guest was appointed Vice-Chair of the Committee.

RESOLVED:

That Councillor R.J.T. Guest be appointed Vice-Chair of the Committee.

3. MINUTES

The minutes of the meeting of the Committee held on 22 April 2013, were submitted.

Matters arising

Councillor M.A. Reece said he had referred to the extra 54 Police Constables made available and asked if they would be deployed “on the beat” to act as a physical deterrent but had not received a response to his question.

The Member Engagement Manager indicated that he would pursue the information which the Police and Crime Commissioner had been asked to provide and forward it to Members.

RESOLVED:

That the minutes be approved as a correct record and signed by the Chairman.

4. GLYNDWR UNIVERSITY AND ITS LINKS WITH FLINTSHIRE COUNTY COUNCIL

The Chairman welcomed and introduced Professor Peter Heard, Pro Vice-Chancellor (Research), Glyndwr University, and invited him to give a presentation on the linkages between the University and the Council.

Professor Heard provided background information and referred to the University’s two ‘campus’ sites in Flintshire which were the Advanced Composites Training and Development Centre at Broughton and Glyndwr University at Northop. He advised that the campuses formed part of the University’s developing Knowledge Industry Corridor which included Glyndwr University St. Asaph and two centres in Wrexham. He made particular reference to the ASTUTE project (Advanced Sustainable Manufacturing Technologies) which is a Pan Wales initiative, with Glyndwr working alongside the universities of Swansea and Cardiff, as well as other universities in Wales, to stimulate economic growth by applying advanced engineering technologies to manufacturing, particularly in the Aerospace and automotive sectors.

Professor Heard explained that the University engaged with the Authority at various levels and referred specifically to the strong links established with the Economic Development team within the Authority. He reported that the University had worked with the Authority on key strategic bodies including the Mersey-Dee Alliance and Deeside Enterprise Zone and had collaborated to support the City Regions bid.

The Chairman thanked Professor Heard for his overview and invited Members to raise questions.

In response to a question from Councillor R.J.T. Guest around the development of links with the Authority, Professor Heard suggested that a strategic away day would be a useful way to move forward.

Councillor C.A. Thomas asked if the University was represented on the Flintshire Local Service Board (LSB). Professor Heard advised that he sat

on the Flintshire Local Service Board and ensured that the University aligned itself with and made use of the LSB. In response to a further question from Councillor Thomas concerning links with schools Professor Heard advised that the University enjoyed strong links with many schools across Flintshire from primary level up to around the age of 16.

The Chief Executive referred to the Economic Ambition Board and gave an overview of its purpose commenting on manufacturing technology in Wales and the need for skills planning, provision and education. Professor Heard advised that a member of the University's Executive would shortly join the Economic Ambition Board.

Councillor C.A. Thomas asked if it was intended that Glyndwr University would become part of Coleg Cambria. Professor Heard said he was currently unable to comment on the structure of education across the region and made reference to the Web Review report which was to be submitted to the Minister on 28 June 2013. The Chief Executive commented on collaborative working with universities across the border and on the Web Review and the recommendations expected from it.

In response to the further questions and observations put forward by Members Professor Heard emphasised the need to encourage students to have the aspiration to progress to higher education. He also outlined his ambition to establish an advance manufacturing centre which facilitated the needs of all manufacturing industries within the region. He referred to a predicted skills shortage in the future and the need for a qualified and skilled labour force to service the demands of businesses and provide "careers for life". Professor Heard explained that investment to fund the development of the manufacturing centre would be sought from both the Welsh Government and the private sector.

The Chairman thanked Professor Heard for an informative presentation.

RESOLVED:

That the presentation be received and Professor Heard be thanked for his attendance.

5. REGIONAL COLLABORATION PROJECTS

The Chief Executive introduced a report to inform the Committee of the current regional collaboration projects and to invite members to contribute to a review of governance and reporting arrangements to be carried out by the Corporate Resources Overview and Scrutiny Committee and the Audit Committees.

The Chief Executive advised that collaboration projects ranged in type and scale and referred to the type, purpose, benefits, progress, performance and governance arrangements for each collaboration as detailed in the report.

He explained that a summary of all the principal collaboration projects within the region where Flintshire was a partner was attached to the report.

The Chairman invited Members to raise questions.

Councillor D.I. Mackie expressed the need for good control of collaboration arrangements and raised concerns around the submission of remote reports and whether they would address the interests and implications for the Authority sufficiently. The Chief Executive responded to the points made and gave an assurance of the protocols introduced to address new proposed principal collaboration, principal collaboration under development, and any adopted and implemented principal collaboration.

Councillor R.J.T. Guest also expressed concerns around the progress and scrutiny arrangements for collaborative working. He referred to the decision at the meeting of Cabinet on 21 May 2013 that the Corporate Resources Overview & Scrutiny Committee and the Audit Committee be invited to review governance and performance reporting arrangements for principal collaborations, and suggested that the Community Profile and Partnerships Overview & Scrutiny Committee should also be invited to join the review. The proposal was agreed by Members.

Councillor C.A. Thomas referred to the arrangements for schools under Gwasanaeth Effeithiolrwydd a Gwella Ysgolion Rhanbarthol Gogledd Cymru (GWeR) and asked if schools were being contacted to see how they were feeling about it. She commented that schools may experience remoteness about the new arrangements. The Chief Executive commented on the operational structure in place to support and respond to the changing needs of schools.

The Chief Executive responded to Members' questions, following which the Member Engagement Manager commented that the Committee would become an integral part of the consultation on governance for collaborative working.

RECOMMENDATIONS

- (a) That the progress made by North Wales as a progressive region and by Flintshire as a progressive Council be noted: and
- (b) That a review of governance for principal collaborations be carried out jointly by the Corporate Resources Overview & Scrutiny Committee, the Audit Committee, and the Community Profile & Partnerships Overview & Scrutiny Committee.

6. FLINTSHIRE COMMUNITY ENDOWMENT FUND

The Policy Performance and Partnerships Manager introduced a report to advise of the final arrangements of the 'Flintshire Community Endowment Fund' prior to any agreed launch. In addition the report provided advice from

the Head of Finance in her Section 151 statutory officer role in relation to risk, return and value for money as set out in the recommendation to the November 2012 Cabinet report.

The Policy Performance and Partnerships Manager provided background information and outlined the working arrangements for the closure and transfer of existing moribund and ineffective education trust funds to a newly established 'Flintshire Community Endowment Fund' to be managed and administered by the trustees of the Community Foundation in Wales.

Councillor R.J.T. Guest expressed concerns regarding the governance arrangements for the Fund. He referred to the proposed composition of the Grants Panel and suggested that it would be helpful to include an educational representative in the membership. Councillor Guest also commented on the proposal to encourage donations to the Fund from potential philanthropic individuals, companies, businesses and organisations and expressed the view that there was a need to promote independence from the Authority concerning decision making on grant distributions.

The Chief Executive acknowledged the points made by Councillor Guest. The Policy Performance and Partnerships Manager referred to the setting up of a North Wales Business Development Group as a strategic body to grow and develop funds.

Councillor N.R. Steele-Mortimer expressed his support for the new Fund. He referred to the 16 educational trust funds which were moribund or ineffective and asked if details could be provided to the Committee of the purpose and amount in each fund. Officers agreed to send a list of the funds to members of the Committee.

Councillor D.I. Mackie commented on the need for the Fund to retain links with the original objectives. The Policy Performance and Partnerships Manager explained that any investment from the Fund would be targeted for educational purposes up to 25 years with specific aims.

Councillor A.I. Dunbar raised a query about the Community Chest fund. The Policy Performance and Partnerships Manager said that there was no intention to close the Community Chest fund as a result of the establishment of the Flintshire Community Endowment Fund.

In response to a query from Councillor C.A. Thomas concerning applications for funding the Policy Performance and Partnerships Manager explained that the allocation of grants did not replace statutory provision and funding was available for individuals and groups.

RESOLVED:

- (a) That the closedown and transfer of existing moribund and ineffective education trust funds to a newly established 'Flintshire Community Endowment Fund' to be managed and administered by the trustees of

the Community Foundation in Wales, be noted, given the assurances provided by the Head of Finance in her Section 151 statutory officer role, but noting the potential risks which remain; and

- (b) That the Flintshire Community Endowment Fund be launched with the working arrangements as set out in the report.

7. FORWARD WORK PROGRAMME

The Member Engagement Manager introduced the Forward Work Programme of the Committee.

Members reviewed the current programme and agreed that the following items be considered at the next meeting of the Committee to be held on 25 July 2013. In response to a suggestion put forward by Councillor N.R. Steele-Mortimer it was also agreed that a presentation on the Flintshire Neighbourhood Wardens be included on the agenda.

- Flintshire Community Safety Partnership
- Strategic Partnerships report
- To include an update on Flintshire Neighbourhood Wardens

RESOLVED:

- (a) That the Forward Work Programme be agreed subject to the above; and
- (b) That the arrangements in hand for a presentation by the Royal National Lifeboat Institution be noted.

8. DURATION OF MEETING

The meeting commenced at 10.00 a.m. and ended at 11.45 a.m.

9. MEMBERS OF THE PUBLIC AND PRESS IN ATTENDANCE

There were two members of the press in attendance.

.....
Chairman

FLINTSHIRE COUNTY COUNCIL

REPORT TO: **COMMUNITY PROFILE & PARTNERSHIPS
OVERVIEW & SCRUTINY COMMITTEE**

DATE: **25 JULY 2013**

REPORT BY: **CHIEF EXECUTIVE**

SUBJECT: **ANNUAL COMMUNITY SAFETY PARTNERSHIP
UPDATE**

1.00 PURPOSE OF REPORT

1.01 To provide Members with an overview of the Community Safety Partnership's activities over the past year.

2.00 BACKGROUND

2.01 The Flintshire Community Safety Partnership is required to formally report to this committee on an annual basis to provide an overview of activities undertaken over the previous twelve months. This ensures that the Partnership meets its obligations under sections 19 and 20 of the Police & Criminal Justice Act 2006. The legislation came into effect in Wales on 1 October 2009 through the Crime & Disorder (Overview & Scrutiny) Regulations 2009.

2.02 Flintshire County Council has a statutory duty under the 1998 Crime and Disorder Act, and the subsequent amendments by the 2002 and the 2006 Police and Justice Act, to work in partnership with the police, health service, probation and fire service to address the local community safety agenda. Collectively they make up the Community Safety Partnership.

2.03 There has been a partnership in existence in Flintshire since 1999. To support the Partnership, the county is served by a core team of local authority and police officers who tackle areas such as domestic abuse, substance misuse and anti-social behaviour, along with the Neighbourhood Wardens.

2.04 Each year the Community Safety Partnership is required to produce a Strategic Assessment, and also formulate a Strategic Plan every three years.

2.05 In recent years the drive to rationalise the work of partnerships has been the catalyst for significant changes in the Flintshire Community Safety Partnership's governance structure. In April 2013 the Partnership merged with the Local Service Board. This has had

minimal impact on the operational delivery structure; however at a strategic level it has meant a greater consistency of approach. The statutory duties of the Community Safety Partnership continue to be fulfilled.

- 2.06 Over the past year great progress has also been made in the way Community Safety Partnerships in North Wales have worked together. The establishment of the North Wales Safer Communities Board in July 2012 has been the most significant regional development. This Board represents a partnership between all the statutory authorities across the region (as defined by the Crime and Disorder Act 1998), along with the voluntary sector. The overall aim of the Board is to introduce greater consistency in this area of work, whilst allowing opportunities to share expertise and work more effectively and efficiently.

3.00 CONSIDERATIONS

- 3.01 It is evident that partnership working improves how agencies tackle crime and disorder. The most recent full year figures for crime and disorder illustrate that rates continued to fall. Below is a summary of some of the key findings:

- There has been a steady reduction in recorded crime in Flintshire over the past four years. In 2012/13 there were 1133 fewer crimes recorded than in 2009/10; representing a reduction of 13.6%.
- Since 2009/10 the number of violence against the person offences have decrease year on year with an overall reduction of 15.6%
- In 2012/13 there were 64 fewer burglary dwellings across the county than in the previous year, representing a decrease of 17.7%
- During the same period Burglary other than Dwelling (BOTD) offences fell by 6.1%, Criminal Damage reduced by 5.7% and Vehicle Crime decreased by 1.5%.
- There were 364 fewer ASB incidents in Flintshire in 2012/13 than 2011/12, equating to a fall of 6.4%

- 3.02 The Community Safety Partnership's Strategic Plan underpins the work of the Partnership. It spans a three year period, and is reviewed on an annual basis. The current plan runs between April 2011 and March 2014. A copy of this document accompanies this report.

- 3.03 The priorities of the current Plan are to:

- Reduce the levels of violent crime including domestic and sexual violence.

- Tackle anti-social behaviour.
- Reduce the levels of acquisitive crime.
- Reduce re-offending by supporting the agencies which actively manage offenders.
- Reduce the harm that substance misuse causes to communities, families and individuals.
- Tackle hate related crime and disorder and encourage reporting.
- Engage with the community to provide re-assurance and increase public confidence.

3.04 'People are Safe' also features as a priority for the Local Service Board's Single Integrated Plan. This will be Flintshire's primary cross-partner strategic plan whereby local, sub-regional and regional drivers will be underpinned through detailed delivery plans.

3.05 From 1 April 2014 a regional Strategic Community Safety Plan will be produced, which will compliment a regional Strategic Assessment. The community safety partnerships of North Wales are the first of the strategic partnerships to adopt this way of working. Local and sub-regional differences, and needs, will be reflected in the Strategic Plan.

3.06 At the 7 June 2013 meeting of the Safer Communities Board the draft priorities and outcomes of the Plan were presented, and approved. The areas identified have been recommended based on the findings of the North Wales Community Safety Strategic Assessment. The table below summarises the key priorities:

Overall aim: Making North Wales a safer place to live	
Priority Area	Outcomes
Domestic Abuse and Sexual Violence	<ul style="list-style-type: none"> ▪ Increase confidence reporting serious sexual offences ▪ Increase confidence reporting incidents of domestic abuse ▪ Reduce the risk of becoming a repeat victim of domestic abuse
Alcohol Related Violent Crime with Injury	<ul style="list-style-type: none"> ▪ Reduce the risk of becoming a victim of violent crime resulting in injury
Acquisitive Crime	<ul style="list-style-type: none"> ▪ Develop effective responses to locally identified problems of acquisitive crime ▪ Jointly address those who cause the greatest harm in our communities

Anti-Social Behaviour	<ul style="list-style-type: none"> ▪ Reduce the risk of becoming a victim of anti-social behaviour
Substance Misuse	<ul style="list-style-type: none"> ▪ Improving availability and quality of education, prevention and treatment services and related support, with greater priority given to those related to alcohol¹

3.07 **Progress in 2012/3**

Since April 2012 the Flintshire Community Safety Partnership has undertaken a wide range of activities, and supported many different services, a sample of which is listed below. This work has been separated to denote regional and local work:

Regional Activities and Progress

The newly established North Wales Safer Communities Board has met on four occasions (3 July 2012, 1 November 2012, 4 February 2013 and 7 June 2013). Some of the key developments and decisions taken during the first year have been:

- i. Approval of a North Wales Crime and Disorder Strategic Assessment for 2012
- ii. Agreement and approval to produce a regional Community Safety Strategic Plan
- iii. Strategic oversight of the Substance Misuse Area Planning Board
- iv. Co-ordinated response to the Welsh Government's 10,000 Safer Lives Initiative
- v. Consistency of approach to regionally commissioned grants, namely the Youth Crime Prevention Fund and Substance Misuse Action Plan Fund
- vi. Membership and participation of the Police and Crime Commissioner (PCC)
- vii. Recommendation of a Commissioning Framework for the PCC
- viii. Establishment of a regional task and finish group on Human Trafficking

All actions have been completed, or are progressing to plan.

Local Activities and Progress

¹ Priority from the Welsh Assembly Government Substance Misuse Strategy 2008-18.

At a local level some of the key milestones have been as follows:

- i. Flintshire County Council is leading the co-ordination of the Safer Communities Board on behalf of regional partners
- ii. Leading the development of a regional Community Safety Plan
- iii. Co-ordinating the regional response to the 10,000 Safer Lives initiative
- iv. Obtaining formal approval of funding for the following grants: Community Safety Fund, Substance Misuse Action Plan Fund, Domestic Abuse Services Grant and the Safer Communities Fund funding for 2012/3.
- v. Re-establishment of the Joint Action Group, to replace the function of the Priority Crime Group. This group will focus on the victims, offenders and locations.
- vi. Successful launch of the Street Rugby Initiative that will target young people in Communities First areas during the summer holidays.
- vii. On-going support of Operation Housewatch. This initiative will safeguard vacant and empty residential properties through the installation of low-level security equipment. The scheme will be supported by the Neighbourhood Wardens.
- viii. Further delivery of training to multi agency groups around the use of the CAADA (national accreditation) 'Domestic Abuse Stalking and Harassment Risk Assessment' tool for Domestic Abuse.
- ix. Commissioning a number of service user recovery programmes following a successful pilot run in Conwy, Denbighshire and Wrexham. This will improve longer term and sustainable recovery from substance misuse.
- x. Contributing to the 'People are Safe' priority for the LSB
- xi. Awareness campaign to target older people misusing alcohol
- xii. Presence at the Flint and Denbigh Show
- xiii. Highly commended quality assurance from accredited body regarding the Flintshire Multi Agency Risk Assessment Conference
- xiv. Successful White Ribbon campaign targeting young people
- xv. On-going support of Doorstep crime initiatives
- xvi. Establishment of task and finish Anti Social Behaviour groups in Holywell and Flint

All actions have been completed, or are progressing to plan.

Key Milestones for the Year Ahead

- i. Flintshire Community Safety Partnership to merge with the Local Service Board
- ii. Continued support and co-ordination of the North Wales Safer Communities Board
- iii. Produce draft North Wales Community Safety Plan
- iv. Launch of the domestic abuse workplace policy for Flintshire

- County Council employees
- v. Scoping the work streams emanating from ‘Effective Services for Vulnerable Groups’ – particularly relating to domestic violence.
- vi. Implementing the regional work programme for the 10,000 Safer Lives initiatives
- vii. On-going work with HR to develop a Domestic Abuse Workplace policy
- viii. Flintshire Substance Misuse Action Team to consider the implications of the Area Planning Board assuming greater commissioning powers
- ix. Regional commissioning of substance misuse awareness training for practitioners
- x. Strengthening links with Licensing, Substance Misuse Action Team and North Wales Police to ensure appropriate test purchasing operations within on-licence premises.
- xi. Continued collaborative work regionally and sub regionally.
- xii. Enhancement of existing services to young people based on the recommendations of the Hidden Harm Inquiry and a local service mapping exercise
- xiii. Continue to work with Housing to look at the forthcoming requirement to implement the Wales Management Standard for Anti Social Behaviour
- xiv. Contributing to the ‘People are Safe’ priority area for the Local Service Board
- xv. Develop regional expenditure plan for the Youth Crime Prevention Fund
- xvi. Delivery of programme to raise awareness of steroid abuse in educational settings
- xvii. Provision of training for professional in relation to volatile substance misuse
- xviii. Participating in the Integrated Offender Management Strategy Group for North Wales

4.00 RECOMMENDATIONS

- 4.01 To note the contents of the report.

5.00 FINANCIAL IMPLICATIONS

- 5.01 None as a result of this report.

6.00 ANTI POVERTY IMPACT

- 6.01 None as a result of this report.

7.00 ENVIRONMENTAL IMPACT

- 7.01 None as a result of this report.

8.00 EQUALITIES IMPACT

8.01 None as a result of this report.

9.00 PERSONNEL IMPLICATIONS

9.01 None as a result of this report.

10.00 CONSULTATION REQUIRED

10.01 None as a result of this report.

11.00 CONSULTATION UNDERTAKEN

11.01 None as a result of this report.

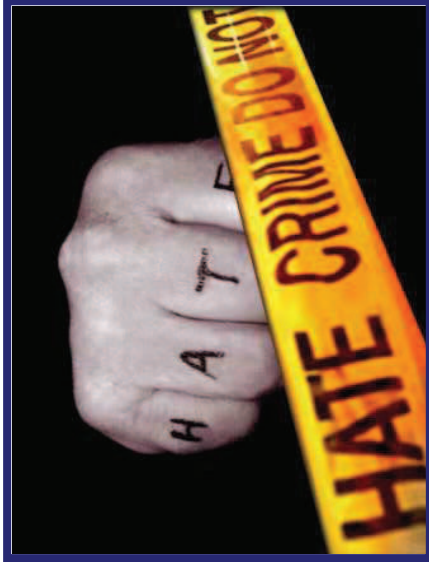
12.00 APPENDICES

12.01 Flintshire & Wrexham Community Safety Plan, 2011-2014

**LOCAL GOVERNMENT (ACCESS TO INFORMATION ACT) 1985
BACKGROUND DOCUMENTS**

**Contact Officer: Sian Jones
Telephone: 01352 702132
Email: sian-jones@flintshire.gov.uk**

This page is intentionally left blank



Flintshire & Wrexham Community Safety

Partnership Plan 2011/2014



Gwasanaeth Tân ac Achub
Fire and Rescue Service



Prawf Cymru
Wales Probation



Bwrdd Iechyd Prifysgol
Betsi Cadwaladr
University Health Board

Contents

Foreword	Page 1
Flintshire and Wrexham Community Safety Partnerships	Page 2
Our shared priorities for 2011/2014	Page 5
How we will measure success 2011/2014	Page 20
Action plans 2011/2014	Page 22
Delivering a safer community	Page 44

Flintshire & Wrexham Community Safety Partnership Plan 2011/2014

Foreword

Flintshire & Wrexham Community Safety Partnerships are made up of public and voluntary agencies, working together with one common goal – to make our area safe.

As partnerships, we have made real progress in reducing crime, fear of crime and anti-social behaviour. The total number of crimes taking place in our area continues to fall, with total crime levels in Flintshire & Wrexham reducing by 12% in 2010. The number of anti-social behaviour incidents reported to the police is also steadily falling, with levels of anti-social behaviour in 2010 being 10% lower than that experienced the year before.

For the first time the two partnerships have undertaken a joint Partnership Plan for the whole area. This provides a strategic overview of community safety issues in our area, based on long-term trends and emerging issues, and uses this information to confirm our priorities and inform our Action Plans for 2011/2014.

Although there have been considerable crime reduction successes to date, fear of crime and concern over levels of anti-social behaviour continue to be of particular priority for local people. This joint

Partnership Plan sets out how the partnerships will address the priorities identified in the assessment. It sets out why we have identified the issue as a priority, what we will do to address it and how we will know whether we are succeeding.

The joint Partnership Plan provides clear evidence of both Community Safety Partnerships' shared commitment to reducing local levels of crime and disorder in our area.

Our success so far would not have been possible without the enthusiasm and commitment of all of our partners and the communities and we hope that you will continue to work with us to turn our vision into reality for our communities

Colin Everett

Chief Executive
Flintshire County Council
Chair of Flintshire CSP



Lee Robinson

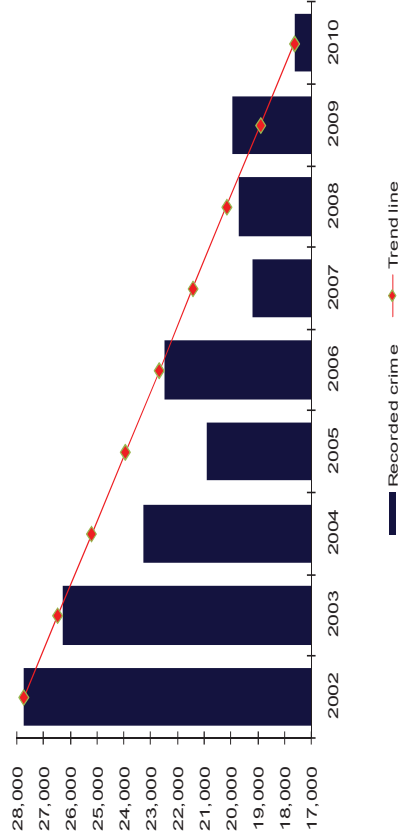
Strategic & Performance Director
Wrexham CBC
Chair of Wrexham CSP



Flintshire & Wrexham Community Safety Partnerships – Priorities for 2011/2014

Flintshire and Wrexham - increasingly safe places

Flintshire and Wrexham are increasingly safe places to live work and visit, with levels of crime steadily reducing. Recorded crime in Flintshire and Wrexham has fallen by 12% since 2009, and by 36% when compared to the levels experienced in 2002.



Although crime levels are reducing, fear of crime and disorder and concern over levels of anti-social behaviour continue to be priorities for local people.

Both Flintshire and Wrexham Community Safety Partnerships are committed to reducing local levels of crime and disorder, improving community safety and reassuring those who live, work or visit the area.

The outcomes we are trying to achieve

The overall aims of Flintshire and Wrexham Community Safety Partnerships remain unchanged. We continue to work together and with our partners to achieve two main outcomes for the residents of Flintshire and Wrexham

- Reducing crime - 'Our area is a safe place to live, work and visit'
- Reducing fear of crime - 'Our area feels like a safe place to live, work and visit'

This document sets out the Community Safety Partnerships' plans to tackle crime, disorder and anti-social behaviour and reduce the fear of crime in Flintshire County and Wrexham County Borough during the period 2011 - 2014.

Flintshire & Wrexham Community Safety Partnerships – Priorities for 2011/2014

Partnerships working to make Flintshire and Wrexham safer

Community Safety Partnerships were established in Flintshire and Wrexham in 1998. They bring together key agencies in each of the local authority areas to work jointly to reduce crime and the fear of crime. In each area the CSP includes the relevant local authority (Flintshire County Council or Wrexham County Borough Council) and:

Statutory partners

- North Wales Police
- North Wales Police Authority
- North Wales Fire and Rescue Service
- Betsi Cadwaladr University Health Board
- Wales Probation

Other partners

- The Welsh Government
- The Home Office
- The local voluntary sector (FLVC and AVOW)
- A range of other public and voluntary sector bodies.

The Partnerships' aim is to make each county a safer place to live, work and visit. This aim links directly into the Community Strategy for each council area where one of the key priorities is to make our communities safer.

Our statutory obligations

Community Safety Partnerships are statutory organisations. The Crime and Disorder Act 1998 makes it a legal requirement for each local authority area to have such a partnership.

Community Safety Partnerships have a legal duty to work with local agencies and organisations to develop and implement strategies to tackle crime and disorder including anti-social and other behaviour adversely affecting the local environment, as well as the misuse of drugs in its area.¹

As part of these statutory duties the Home Office require each Community Safety Partnership to:

- undertake an annual strategic assessment of crime, disorder and anti-social behaviour.
- produce a three year partnership plan which is refreshed annually based on the findings of the strategic assessment.

¹ Crime and Disorder Act 1998 as amended by s97 & s98 Police Reform Act 2002 ; Page 3 s1, Clean Neighbourhoods & Environment Act 2005 and Police & Justice Act 2006

Flintshire & Wrexham Community Safety Partnerships – Priorities for 2011/2014

Flintshire and Wrexham each developed a partnership plan for the period 2008-11, in line with the period of the Government's spending review. However, in 2011 the first joint strategic assessment was undertaken, and following on from that the findings have been used to influence and inform the first joint Flintshire and Wrexham Partnership Plan for the period 2011 to 2014.

Our success to date

Since 2002 there has been a 36% reduction overall in the number of crimes recorded in Flintshire and Wrexham Counties.

2010 saw a reduction in recorded crime of 12% compared to the previous two years.

In 2008, the Home Office Crime Team for Wales (HOCTW) set local performance targets for both Flintshire and Wrexham Community Safety Partnerships for the period of their Partnership plan (2008 to 2011). These were to...

- **Maintain** the low level of serious violent crimes
- **Reduce** assaults in Flintshire by 2%, and Wrexham by 4%
- **Reduce** serious acquisitive crime in Flintshire by 2% and Wrexham by 4%

These targets have been met or bettered in both counties:

- Serious violent crime has reduced in 2010/11 by 12% in Flintshire compared to last year, and by 28% in Wrexham compared to 2008/9.
- Assaults have been reduced by 18% in Flintshire and 4% in Wrexham compared to 2008/9
- Serious acquisitive crime has been reduced by 17% in Flintshire and 7% in Wrexham compared to 2008/9

Key facts about crime and disorder in our area

Total crime - Overall crime rates are low with 61 crimes for every 1,000 residents compared to a Welsh average of 69.

Fear of crime - 2.4% of households have reported actually being the victim of crime in the last year but 11.1% are worried about becoming a victim of crime.

Anti-social behaviour - 11.5% of North Wales respondents to the British Crime Survey stated that anti-social behaviour is a problem in their local area compared to the national average of 16%.

Flintshire & Wrexham Community Safety Partnerships – Priorities for 2011/2014

Our shared priorities for 2011/2014

Generally, residents of Flintshire and Wrexham feel safe, and their perception of crime and anti-social behaviour continues to improve. However, some people and some places in Flintshire and Wrexham continue to suffer disproportionately from crime and fear of crime.

In order for us to continue to make progress both Community Safety Partnerships must build upon the achievements already made, and target those issues of greatest significance for communities in Flintshire and Wrexham. The issues that we plan to prioritise during 2011/2014 are to:

- Reduce the levels of **violent crime** including **domestic and sexual violence**
- Tackle **anti-social behaviour**
- Reduce the levels of **acquisitive crime**
- Reduce **re-offending** by supporting the agencies which actively manage offenders
- Reduce the harm that **substance misuse** causes to communities, families and individuals
- Tackle **hate related crime** and disorder and encourage reporting

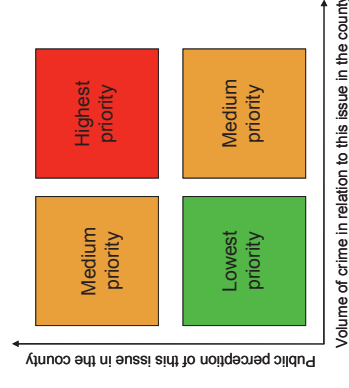
- Engage with communities to provide **re-assurance** and increase **public confidence**

How have we set our priorities?

In January 2011 we undertook a comprehensive strategic assessment of crime, disorder, and anti social behaviour affecting local communities across the two counties during 2010.

As part of this strategic assessment the views of local communities, as well as data from partner organisations, were collected across Flintshire and Wrexham with regard to crime and fear of crime.

The following matrix has been used to assess whether a crime category should be a strategic priority for the Community Safety Partnerships; the matrix takes account of the level of public concern and the actual volume of crime. Using this matrix will ensure the priorities that we set, and initiatives that we develop, are appropriately targeted and address the concerns of our residents



Priority 1: Reduce the level of violent crime, including domestic and sexual violence



Why is this a priority ?

Although the volume of violent crime in Flintshire and Wrexham fell during 2010 it is still an issue that impacts significantly on peoples' fear of crime.

1 in 5 violent crimes occurred in or outside licensed premises and over a quarter of all violence against the person in our area was recorded as being alcohol related

There was an increase in the number of sexual violence offences in Flintshire. While incidents of domestic and sexual violence are lower in volume than other violent crime they will be prioritised to ensure this vulnerable victim group continue to be supported.

How will we measure success ?

Outcome 1 : Our area is a safe place to live work and visit (reducing crime)			
Strategic priority	Flintshire priority	Wrexham priority	Indicator
Reduce the levels of violent crime including domestic and sexual violence	HIGH	HIGH	Number of recorded violent crimes per 1,000 residents

Priority 1: Reduce the level of violent crime, including domestic and sexual violence

What did the strategic assessment tell us ?

- Total violence against the person has decreased by 15% during 2010. The level of most serious violence remains very low, accounting for only 3% of the total incidents of violence against the person in our area.
- The time of offences across Flintshire and Wrexham show increases between 7pm and 2am every night. In Wrexham, there is also an increase between midnight and 1am which is likely to be due to people leaving nightclubs in the town centre.
- A quarter of assaults in Wrexham occurred in the three town centre wards, and a large proportion of the assaults in these town centre wards are fuelled by alcohol, over 20% of all offences are recorded as being alcohol related
- A smaller proportion of assaults in Flintshire are recorded as being alcohol related (16%)
- 26% of domestic violence incidents reported in North Wales are repeat incidents. This compares favourably with our 'most similar group' of police forces where the average level of repeat incidents is 29% and the highest level is 39%.
- Over 30% of sexual violence victims in Wrexham were teenagers aged between 13 and 17 years old, and this category of victim is growing. The largest age category of victims in Flintshire was also teenagers, with 22% of victims being between 14 and 15 years old.

Over the coming year we will :

Violence against the person

- Co-ordinate multi-agency campaigns to coincide with events and times of year which are known to present an increased risk of alcohol fuelled violent crime.
- Continue to use licensing powers to reduce harmful sales of alcohol and promote a safe night time economy
- Encourage positive participation in Community Safety initiatives from licensed premises through continued support of Nightsafe and Pubwatch schemes.

Domestic abuse & sexual violence

- Promote training and support for professionals to ensure that cases are appropriately identified and referred, and provide ongoing support to the Multi Agency Risk Assessment Conference (MARAC).
- Raise awareness of domestic abuse and sexual violence through the development of an integrated campaign challenging attitudes and promoting reporting
- Implement strategic and operational support for the planning and implementation of the local Sexual Violence Action Plan and work with the Local Safeguarding Children's Board to implement the Sexual Exploitation Risk Assessment Framework (SERAF)

Priority 2: Tackle anti-social behaviour



Why is this a priority ?

There has been a reduction in the level of anti-social behaviour reported to the police and both councils during 2010.

However ,despite strong performance, anti-social behaviour continues to be an issue that the majority of residents in Flintshire and Wrexham are concerned about and so remains a key priority for the partnerships.

How will we measure success ?

Outcome 1 : Our area is a safe place to live work and visit (reducing crime)			
Strategic priority	Flintshire priority	Wrexham priority	Indicator
Tackle anti-social behaviour	HIGH	HIGH	Number of reported ASB incidents per 1,000 residents

Priority 2: Tackle anti-social behaviour

What did the strategic assessment tell us ?

- The Crime and Disorder Act 1998 defines ASB as: 'behaviour that caused or was likely to cause harassment, alarm or distress to one or more persons, not of the same household as the perpetrator
- North Wales Police define ASB as 'behaviour by an individual or group that results in; another party feeling personally threatened; creates a public nuisance; has a detrimental impact upon the environment or has a detrimental effect upon the quality of life of an individual or the community as a whole'
- Levels of anti-social behaviour have fallen steadily over the last 4 years which indicates that the targeted intervention undertaken by both CSP's are working well, and should be continued.
- The majority (67%) of ASB incidents reported to the police during 2010 were in relation to rowdy nuisance. 69% of rowdy nuisance complaints were received from Friday evening to Sunday evening. And peaked between the hours of 7pm and 11pm.
- Vehicle related nuisance was another significant category of ASB during 2010, accounting for 7% of the total incidents reported. This category includes the anti-social use of cars, motorbikes, and mini-motorbikes.

- ASB continues to be most significant in wards associated with a strong night time economy.
- Perpetrators of ASB tend to be male (88%), aged 19-29 (46%).

Over the coming year we will :

- Continued development of the tactical multi-agency meeting for the co-ordination and delivery of a range of activities including support for vulnerable and repeat **victims**, enforcement against **offenders** and action against identified problem **locations**.
- Co-ordination of the referral and intervention process to reduce the number of young people who are repeatedly involved in anti-social behaviour, using restorative resolutions, substance misuse referral, diversionary and preventative interventions
- Enforcement and education activity co-ordinated through the multi-agency tactical meeting to target locations where alcohol related antisocial behaviour is a problem.
- Support the enforcement of legislation to prevent the inappropriate sale of alcohol in licensed premises (for example to minors or intoxicated)
- Community Safety support for environmental enforcement and educational operations run by the respective council environmental protection departments

Priority 3: Reduce the level of acquisitive crime



Why is this a priority ?

There has been an overall reduction in the level of acquisitive crime in Flintshire and Wrexham during 2010, although there has been a small increase in the number of domestic burglaries in Wrexham.

Acquisitive crime, particularly domestic burglary, continues to be an issue that impacts upon residents fear of crime in both counties and should therefore remain a priority for 2011/2014

How will we measure success ?

Outcome 1 : Our area <u>is</u> a safe place to live work and visit (reducing crime)			
Strategic priority	Flintshire priority	Wrexham priority	Indicator
Reduce the levels of acquisitive crime	MEDIUM	HIGH	Number of serious acquisitive crimes per 1,000 residents

Priority 3: Reduce the level of acquisitive crime

What did the strategic assessment tell us ?

- Domestic burglary reduced by 7% (53 crimes) in our area during 2010. However, during 2010 there was an increase of 2.5% in Wrexham County Borough compared to 2009. In Flintshire there was a decrease of 65 offences in comparison to 2009 and a 21% improvement.
- Seasonal increases were seen in the volume of domestic burglaries during the months of October and November in both Flintshire and Wrexham counties, a similar trend occurring in 2009.
- All of the detected motor vehicle theft offenders in Wrexham and 88% of the offenders in Flintshire were male. The majority of offenders in both counties were under 20 years old, with the youngest offender being aged 14.
- 17% of all property stolen from motor vehicles during 2010 was vehicle audio equipment. Other prevalent items include power tools (16%), vehicle parts and accessories such as wheels, wing mirrors and body trim (11%), and satellite navigation systems (8%).
- There were just 29 reported incidences of distraction burglary in the area during 2010. All victims were over 65 years old, and 86% were female. In the majority of distraction burglaries the offender purported to be working for a utilities company to secure access to the property.

Over the coming year we will :

Domestic burglary

- Maintain and develop our strong links with Neighbourhood Watch, including the use of the Online Watch Link (OWL) tool to deliver crime alerts to local watch members.
- Co-ordinate multi-agency campaigns in response to emerging burglary “hot-spots” or seasonal risk factors. For example, open windows during the summer period and pre-Christmas alerts
- Maintain and develop our “target hardening”² services for vulnerable households.

Vehicle crime

- Co-ordinate the development and delivery of a range of targeted interventions including tackling vehicle security, decoy cars, mobile automated number plate recognition and vehicle crime prevention packs
- Work with young people who have previously been involved in vehicle crime through the Motor Education Scheme to reduce the risk of them re-offending
- Continue our support for vehicle security messages in selected car parks and safer car park schemes across the area

² Target hardening is increasing household security through advice and/or the provision of security measures.

Priority 4: Reduce re-offending by supporting the agencies which actively manage offenders



Why is this a priority ?

The rate of re-offending of adults in Flintshire is significantly lower than the national average. However, the re-offending rate amongst young people in Flintshire is higher than the average for both North Wales and Wales as a whole.

Re-offending rates of both adults and young people in Wrexham County Borough have improved during 2010. However, adult re-offending rates in Wrexham remain significantly higher than the Welsh national average.

How will we measure success ?

Outcome 1 : Our area is a safe place to live work and visit (reducing crime)			
Strategic priority	Flintshire priority	Wrexham priority	Indicator
Reduce re-offending by supporting the agencies which actively manage offenders	MEDIUM	HIGH	Adult Re-offending rate (Probation) Young People's Re-offending rate (YJS)

Priority 4: Reduce re-offending by supporting the agencies which actively manage offenders

What did the strategic assessment tell us ?

- Community Safety Partnerships have a statutory duty to formulate and implement a strategy to reduce re-offending by both adults and young people.
- The September 2010 rate of adult re-offending, whilst under the supervision of the Probation service, was 7.9% in Flintshire and 14.2% in Wrexham. This compares to a national average of 11.1%, and a North Wales average of 10.9%
- The 2010 rate of re-offending of young people in Wrexham has improved by 1%, while in Flintshire it has deteriorated by 23% in comparison to 2005.
- The Prolific and Priority Offenders scheme in Flintshire and Wrexham has a number of factors in common, including core management arrangements and key service providers (Police & Probation). Despite this, there is a difference in the two areas 2010 performance against the 2007 baseline position. Offenders in the Wrexham PPO scheme had a 16% increase in re-offending behaviour. In contrast, offenders on the Flintshire PPO scheme have achieved a 42% reduction in the number of convictions. The challenge for 2011/2014 will be to build on the current review of provision to improve and develop performance, in particular in terms of the Wrexham adult re-offending rates.

Over the coming year we will :

- Continue to work at a strategic level across Flintshire and Wrexham to tackle re-offending across the area
- Coordinate multi-agency action plans in response to emerging issues based on an assessment of needs.
- We will performance manage the Prolific and Priority Offenders' scheme, and take the necessary action to improve our performance
- We will continue our support for the project to work with identified prolific offenders in the scheme.
- Continue to work at the strategic level to support the development of the Integrated Offender Management (IOM) scheme

Priority 5: Reduce the harm that substance misuse causes to communities, families and individuals.



Why is this a priority ?

Flintshire and Wrexham continue to have lower than average rates of estimated substance misuse in comparison to other Welsh counties. However, residents remain concerned about substance misuse and the impact that it has as a catalyst for other crimes.

How will we measure success ?

Outcome 1 : Our area is a safe place to live work and visit (reducing crime)			
Strategic priority	Flintshire priority	Wrexham priority	Indicator
Reduce the harm that substance misuse causes to communities, families and individuals	MEDIUM	MEDIUM	Adult waiting time between assessment and treatment Young people waiting time between referral and assessment (YJS)

Priority 5: Reduce the harm that substance misuse causes to communities, families and individuals.

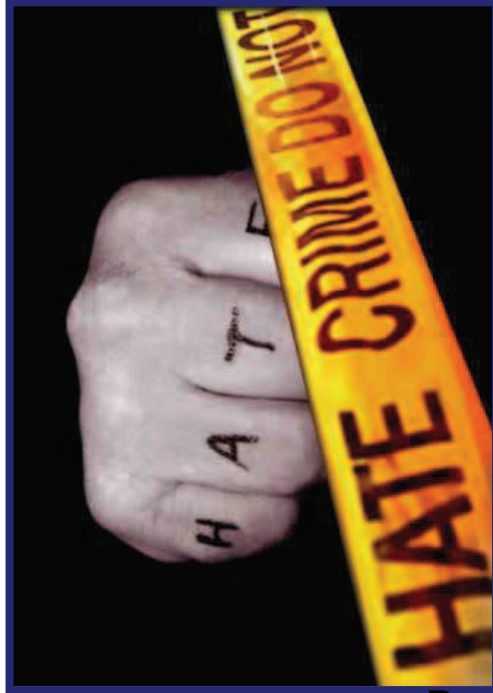
What did the strategic assessment tell us ?

- Dealing and taking illicit drugs are criminal offences in their own right. In addition, drugs and alcohol misuse are often major contributory factors in offending behaviour. Tackling the underlying substance misuse issues also aims to achieve reductions in serious violent crime, repeat domestic abuse and the anti-social behaviour and crimes that matter most to local people.
- There were 912 recorded drugs offences in our area during 2010 this is a 10% increase on the number recorded during 2009, but remains slightly lower than the number recorded in 2008 and before. Only 4% of the crimes recorded during 2010 related to the supply of drugs.
- The majority of people referred for treatment for both alcohol and drugs in our area are between the ages of 30 and 50. However, Health Solutions Wales estimate that the rate of substance misuse is as high amongst the 20-30 age group. This suggests that we need to continue to work hard to target our services at younger people.
- In recent research undertaken by the National Public Health Service for Wales, 36% of 16 to 24 year old in Wales reported binge drinking in the last week, and 52% reported drinking above guideline levels.

Over the coming year we will :

- Commission and performance manage services to deliver a range of education and early intervention initiatives to young people
- Support licensing enforcement and education activity focused on underage sales of alcohol at on and off licences and proxy purchasing
- Promote and support educational campaigns to target proxy sales, and other forms of inappropriate supply of alcohol to young people
- Commission and performance manage services to deliver a range of interventions including, where appropriate, advice and information, drop-ins, day care, residential rehabilitation, recovery, after care and support services.
- Commission and performance manage services to deliver a range of support to young carers, siblings and families of substance misusers

Priority 6: Tackle hate related crime and disorder and encourage reporting



Why is this a priority ?

One of our key aims is to be mindful that there are some vulnerable groups who may be victims or potential victims of crime but who do not report crime or voice their opinions through community consultation through fear or other barriers. We should ensure that these groups continue to be fully represented in our priority setting.

The number of hate crimes reported to police in Flintshire has decreased in the year, and remains significantly lower than the number experienced by similar partnerships

The volume of hate crime reported in Wrexham during 2010 to the police or third party reporting centres continues to be a concern

How will we measure success ?

Outcome 1 : Our area <u>is</u> a safe place to live work and visit (reducing crime)			
Strategic priority	Flintshire priority	Wrexham priority	Indicator
Tackle hate related crime and disorder and encourage reporting	MEDIUM	MEDIUM	Total number of hate related crimes and incidents reported

Priority 6: Tackle hate related crime and disorder and encourage reporting

What did the strategic assessment tell us ?

- Hate crime is any crime “*which is perceived by the victim or any other person to be based upon prejudice towards or hatred of an identifiable group of people*”. For example, a target group that is identified by their **race, religion, sexuality, or disability**.
- As with other under-reported crime, when tackling the issue of hate related crime part of the approach needs to include increasing confidence in and access to reporting. Wrexham CSP has worked with colleagues in Community Cohesion to improve reporting over a number of years. Within this development context, it is no surprise that reports of hate crime in Wrexham have increased.
- During 2010 there were 77 hate related offences reported to the police in Wrexham and 54 reports of hate crime were made at third party reporting centres in Wrexham County Borough. Of the latter 5.5% were identified as homophobic and 5.5% disability hate crime.
- During 2010 there were 29 hate crime offences reported to the police in Flintshire
- 81% of hate crimes reported to the police in our area were racially motivated, with homophobic related offences being the next most prevalent type of hate crime, at 14% of the total.

Over the coming year we will :

- We will continue to participate in strategic planning and operational activity to improve community cohesion, support victims of hate crime and deal with perpetrators.
- We will work to increase opportunity and accessibility for victims to report hate crime
- We will continue to support community cohesion teams to deliver targeted campaigns and publicity aimed at increasing awareness, supporting victims and bringing perpetrators to justice

Priority 7: Engage with the community to provide re-assurance and increase public confidence



Why is this a priority ?

While there is ongoing improvement in actual crime levels, there are a disproportionate number of people who feel that there is a problem with crime and anti-social behaviour in the area. This is known as the 'perception gap' and is an issue nationally with two thirds to three quarters of people surveyed annually feeling that reported crime is rising, when in fact it has fallen consistently over the past decade

Both Flintshire and Wrexham Community Safety Partnerships need to put a greater emphasis on reducing the fear of crime in line with the actual reductions in crime they are achieving

How will we measure success ?

Outcome 2 : Our area feels like a safe place to live work and visit

Strategic priority	Flintshire priority	Wrexham priority	Indicator
Engage with the community to provide re-assurance and increase public confidence	HIGH	HIGH	% respondents to NWP "confidence survey" who consider crime and anti-social behaviour is being dealt with by police & council

What did the strategic assessment tell us ?

- 2.1% of Flintshire and Wrexham residents have reported being the victim of personal crime in the last year but the most recent British crime survey indicates that 3.9% think they are likely to be a victim of this kind of crime.
- 2.4% of the households in Flintshire and Wrexham have reported being a victim of crime in the last year, but 11.1% of people think their household is likely to experience crime
- 87% of residents in Wrexham and 80% in Flintshire agreed that crime and anti-social behaviour was being dealt with effectively by North Wales Police and the local councils
- The findings of the police confidence survey, revealed that people across the two councils, identified their main concerns were:

- Careless and dangerous driving
- Young people hanging around the streets
- People using or dealing drugs
- Rubbish or litter lying around
- Vandalism, graffiti to property or vehicles

Over the coming year we will :

- Co-ordinate key campaigns in response to issues identified by the CSP action groups. For example, seasonal campaigns and operational campaigns to highlight key issues and support crime reduction initiatives and reinforce positive messages about community safety in the area.
- Develop, implement, monitor and review a programme of community consultation and engagement. Including public access to community safety information; community networks; web based communications and involving the community in campaigns and consultation exercises
- Develop, implement, monitor and review the local application of the “Prevent” element of the Government’s anti-terrorism strategy in line with Home Office Guidance

Flintshire & Wrexham Community Safety Partnerships – Measuring Success

How we will measure our success 2011/2014

The Community Safety Partnerships have set two outcomes – clear statements of what we want to achieve. These outcomes and the indicators that will let us know if we achieve them are shown below

- Reducing crime - ‘Our area is a safe place to live, work and visit’
- Reducing fear of crime - ‘Our area feels like a safe place to live, work and visit’

The outcomes we want and indicators of our success:

Outcome 1 : Our area <u>is</u> a safe place to live work and visit (reducing crime)	
Indicator	Detailed description
Total crime	The total number of recorded crimes in each council area per annum for every 1,000 residents
Outcome 2 : Our area <u>feels like</u> a safe place to live work and visit (reducing the fear of crime)	
Indicator	Detailed description
Public confidence	% of respondents to the North Wales Police local confidence survey who feel that ‘the police and their local council are dealing with crime and anti-social behaviour’

Flintshire & Wrexham Community Safety Partnerships – Measuring Success

Outcome 1 : Our area <u>is</u> a safe place to live work and visit (reducing crime)			
Strategic priority	Flintshire	Wrexham	Indicator
Reduce the levels of violent crime including domestic and sexual violence	HIGH	HIGH	Number of recorded violent crimes per 1,000 residents
Tackle anti-social behaviour	HIGH	HIGH	Number of reported ASB incidents per 1,000 residents
Reduce the levels of acquisitive crime	MEDIUM	HIGH	Number of serious acquisitive crimes per 1,000 residents
Reduce re-offending by supporting the agencies which actively manage offenders	MEDIUM	HIGH	Adult re-offending rate (Probation) Young People re-offending rate (YJS)
Reduce the harm that substance misuse causes to communities, families and individuals	MEDIUM	MEDIUM	Adult waiting time between assessment and treatment. Young people waiting time between referral and assessment (YJS)
Tackle hate related crime and disorder and encourage reporting	MEDIUM	MEDIUM	Total number of hate related crimes and incidents
Outcome 2 : Our area <u>feels</u> like a safe place to live work and visit			
Engage with the community to provide re-assurance and increase public confidence	HIGH	HIGH	% respondents to NWP “confidence survey” who consider crime is being dealt with by police & council

2011/2014 Action Plans

Priority 1 – Reduce the levels of violent crime including domestic & sexual violence

How will we measure success ?

Outcome 1 : Our area is a safe place to live work and visit (reducing crime)			
Strategic priority	Flintshire priority	Wrexham priority	Indicator
Reduce the levels of violent crime including domestic and sexual violence	HIGH	HIGH	Number of violent crimes per 1,000 residents

Page 38

Where are we now ?

- Total violence against the person across Flintshire and Wrexham has reduced by 15% between 2009 and 2010, with a 16% reduction in Flintshire and 14% in Wrexham County Borough.
- The level of domestic abuse reported to the police has remained fairly stable since 2008 while in Wrexham there appears to have been a slight reduction in the number of offences recorded. The rate of repeat referrals to the Multi Agency Risk Assessment Conference (MARAC) has remained fairly steady in both counties over the last three years at around 25% to 27%

2011/2014 Action Plans

Priority 1 – Reduce the levels of violent crime including domestic & sexual violence

Violence against the person

By March 2014 we will	Indicator	Flintshire Baseline 2010/11	Wrexham Baseline 2010/11	Key actions
.... maintain the low level of serious violent crimes in Flintshire & Wrexham	Number of serious violent crimes per 1,000 residents	0.4	0.38	Co-ordinate multi-agency campaigns to coincide with events and times of year which are known to present an increased risk of alcohol fuelled violent crime. Encourage positive participation in Community Safety initiatives from licensed premises through continued support of Nightsafe and Pubwatch schemes.
.... reduce assaults in Flintshire and Wrexham	Number of assaults with less serious injury per 1,000 residents	4.4	6.57	Continue to use licensing powers to reduce harmful sales of alcohol and promote a safe night time economy Encourage positive participation in Community Safety initiatives from licensed premises through continued support of Nightsafe and Pubwatch schemes.

2011/2014 Action Plans

Priority 1 – Reduce the levels of violent crime including domestic & sexual violence

Domestic abuse

By March 2014 we will	Indicator	Flintshire Baseline 2010/11	Wrexham Baseline 2010/11	Key actions
.... reduce the number of victims who suffer repeat incidents of domestic abuse.	% Repeat referrals to MARAC (CAADA data)	25.5% ³	27.5% ³	Provide ongoing support to the Multi Agency Risk Assessment Conference (MARAC) which considers high risk cases
	% of victims of domestic abuse who are repeat victims (Police data)	TBC	TBC	Continue to offer a comprehensive target hardening service, including the timely fitting of any required equipment, particularly in support of high risk victims.
.... increase the number of domestic abuse incidents reported	Total number of domestic abuse incidents in Flintshire and Wrexham	TBC	TBC	Raise awareness of domestic abuse and sexual violence through an integrated campaign challenging attitudes and promoting reporting, including by underrepresented groups
	% of domestic violence incidents which are brought to justice	TBC	TBC	Increase the number of victims accessing support services
.... increase the number of domestic violence incidents which are brought to justice.	Multi-agency referral rate to MARAC	42.5% ³	29.9% ³	Continue to provide an Independent Domestic Abuse Advocacy Service (IDVA) to support victims through the Criminal Justice System.
				Promote training and support for professionals to ensure that cases are appropriately identified and referred to MARAC

³ CAADA Data Jul 2010–Jun 2011

2011/2014 Action Plans

Priority 1 – Reduce the levels of violent crime including domestic & sexual violence

Sexual violence

By March 2014 we will	Indicator	Flintshire Baseline 2010/11	Wrexham Baseline 2010/11	Key actions
.... Increase the number of serious sexual offences brought to justice	% of serious sexual offences which are brought to justice	TBC	TBC	Participation in sub-regional and regional joint working initiatives to improve the impact on confidence in the Criminal Justice System Promote and support the development of the Sexual Abuse Referral Centre (SARC) and linked services
.... Reduce the number of young people who are victims of sexual violence	% of victims of sexual violence who are between 13 and 17 years old	TBC	TBC	Co-ordinate targeted educational work with young people, linked to the Children and Young People's Partnership and Children Services, regarding respect and risk in order to increase awareness of the risks of becoming a victim and prevent offending Support the Local Safeguarding Children's Board to implement the Sexual Exploitation Risk Assessment Framework (SERAF) Support and promote training for professionals to respond appropriately to young people at risk of sexual violence

2011/2014 Action Plans

Priority 2 – Tackle anti social behaviour

How will we measure success ?

Outcome 1 : Our area is a safe place to live work and visit (reducing crime)			
Strategic priority	Flintshire priority	Wrexham priority	Indicator
Tackle anti-social behaviour	HIGH	HIGH	Number of ASB incidents per 1,000 residents

Page 42

Where are we now ?

- Between 2007 and 2010 antisocial behaviour reported to the police reduced significantly from 11,107 incidents to 8,200 in Wrexham, a reduction of 26%. In Flintshire over the same period it fell by 18.5%
- Criminal damage reported to the police has also reduced in both counties. In Flintshire it has fallen by 36% since 2008 (with a 21% reduction between 2009 and 2010). In the same period it fell in Wrexham by 12.5%
- In April 2011 the Home Office introduced a new classification system for Anti-Social Behaviour to allocate incidents to one of three categories - Personal, Nuisance and Environmental. This means that historical data prior to April 2011 is not comparable and new baselines will have to be set.

2011/2014 Action Plans

Priority 2 – Tackle anti social behaviour

Rowdy nuisance

By March 2014 we will	Indicator	Flintshire Baseline 2010/11	Wrexham Baseline 2010/11	Key actions
.... Reduce the number of anti-social behaviour incidents	Number of anti-social behaviour incidents per 1,000 residents	To be established	To be established	Continued development of the tactical multi-agency meeting for the co-ordination and delivery of a range of preventative and diversionary activities including support for vulnerable and repeat victims , enforcement against offenders and action against identified problem locations
... Reduce alcohol related ASB	Number of alcohol related ASB incidents recorded by police...	To be established	To be established	Co-ordination of the referral and intervention process to reduce the number of young people who are repeatedly involved in anti-social behaviour, using interventions as restorative resolutions, substance misuse referral, diversionary and preventative interventions Co-ordinate enforcement and education activity through the multi-agency tactical meeting to target locations where alcohol related antisocial behaviour is a problem Support the enforcement of legislation to prevent the inappropriate sale of alcohol in licensed premises (for example to minors or the intoxicated)

2011/2014 Action Plans

Priority 2 – Tackle anti social behaviour

Criminal and environmental damage

By March 2014 we will	Indicator	Flintshire Baseline 2010/11	Wrexham Baseline 2010/11	Key actions
.... Reduce the number of incidents of criminal damage	Number of criminal damage incidents per 1,000 residents	10.55	17.31	<p>Operation Gingerbread will ensure that additional security is in place for schools in both counties during the holiday periods</p> <p>Support and co-ordinate the delivery of diversionary activity for young people who would not otherwise be engaged in constructive activities during the school holiday periods</p> <p>Specific enforcement and preventative interventions in hotspot areas identified by analysis, and community intelligence</p> <p>Community Safety support for environmental enforcement and educational operations run by the respective council environmental protection departments</p>

2011/2014 Action Plans

Priority 3 – Reduce levels of acquisitive crime

How will we measure success ?

Outcome 1 : Our area is a safe place to live work and visit (reducing crime)			
Strategic priority	Flintshire priority	Wrexham priority	Indicator
Reduce the levels of acquisitive crime	MEDIUM	HIGH	Number of serious acquisitive crimes per 1,000 residents

Where are we now ?

- Acquisitive crime includes burglary, theft of and from a vehicle and personal or business robbery.
- Between 2009 and 2010 in Flintshire and Wrexham the overall volume of these crimes reduced by 15%.
- In Flintshire there have been significant reductions in both burglary (down 21%) and thefts from vehicles (40%), while Wrexham has seen vehicle theft reduced by 20%
- The rate of serious acquisitive crime in Flintshire was 5.07 per thousand population, and 9.39 per thousand in Wrexham.

2011/2014 Action Plans

Priority 3 – Reduce levels of acquisitive crime

Domestic burglary

By March 2014 we will	Indicator	Flintshire Baseline 2010/11	Wrexham Baseline 2010/11	Key actions
.... Reduce domestic burglary	Number of domestic burglaries per 1,000 residents	3.5	8.6	Maintain and develop our strong links with Neighbourhood Watch, including the use of the Online Watch Link (OWL) tool to deliver crime alerts to local watch members.
.... Maintain the low level of distraction burglaries	Number of distraction burglaries per 1,000 residents	0.05	0.19	Co-ordinate multi-agency campaigns in response to emerging burglary “hot-spots” or seasonal risk factors including promoting increased home security Maintain and develop our “target hardening” ⁴ services for vulnerable households.

⁴ Target hardening is increasing household security through advice and/or the provision of security measures.

2011/2014 Action Plans

Priority 3 – Reduce levels of acquisitive crime

Vehicle crime

By March 2014 we will	Indicator	Flintshire Baseline 2010/11	Wrexham Baseline 2010/11	Key actions
.... Reduce the number of vehicles which are stolen	Number of thefts of a vehicle per 1,000 residents	1.59	1.84	Co-ordinate the development and delivery of a range of targeted interventions including tackling vehicle security, decoy cars, mobile automated number plate recognition, vehicle crime prevention packs Work with young people who have previously been involved in vehicle crime through the Motor Education Scheme to reduce the risk of them re-offending
.... Reduce the number of times property is stolen from a vehicle	Number of thefts from a vehicle per 1,000 residents	1.78	3.47	Continue our support for vehicle security messages in selected car parks and safer car park schemes across the area

2011/2014 Action Plans

Priority 4 – Reduce re-offending by supporting agencies which actively manage offenders

How will we measure success ?

Outcome 1 : Our area is a safe place to live work and visit (reducing crime)			
Strategic priority	Flintshire priority	Wrexham priority	Indicator
Reduce re-offending by supporting those agencies which actively manage offenders	MEDIUM	HIGH	Adult re-offending rate (Probation) Young People re-offending rate (YJS)

Page 48

Where are we now ?

- The rate of reoffending of young people in Wrexham had improved by only 1%, and had deteriorated in Flintshire by 23% comparing rates in December 2010 to the 2005 baseline. This is in contrast to a 20% improvement across Wales as a whole.
- The September 2010 rate of adult re-offending, whilst under the supervision of the Probation service, was 7.9% in Flintshire and 14.2% in Wrexham. This compares to a national average of 11.1%, and a North Wales average of 10.9%

2011/2014 Action Plans

Priority 4 – Reduce re-offending by supporting agencies which actively manage offenders

Adult offender management

By March 2014 we will	Indicator	Flintshire Baseline 2010/11	Wrexham Baseline 2010/11	Key actions
.... Reduce the rate of re-offending of adults	% of offenders managed by Wales Probation in Flintshire and Wrexham who re-offend	7.68%	13.51%	<p>Continue to work at the strategic level across Flintshire and Wrexham to tackle re-offending across the area</p> <p>Coordinate multi-agency action plans in response to emerging issues based on assessment of needs</p> <p>We will performance manage the Prolific and Priority Offenders' scheme, and take the necessary action to improve our performance</p> <p>We will continue our support for the project working with identified prolific offenders in the scheme.</p> <p>Continue to support the development of the Integrated Offender Management (IOM) scheme</p>

2011/2014 Action Plans

Priority 4 – Reduce re-offending by supporting agencies which actively manage offenders

Young people offender management

By March 2014 we will	Indicator	Flintshire Baseline 2010/11	Wrexham Baseline 2010/11	Key actions
.... Reduce the rate of re-offending of young people	% of offenders managed by the Youth Justice Service who re-offend	1.49	1.17	<p>Continue our work with the Youth Justice Service to reduce the risk of young people re-offending.</p> <p>Continue to work at the strategic level across Flintshire and Wrexham to tackle re-offending across the area</p> <p>We will continue to support the YJS to provide diversionary activities and interventions, including support for young people who misuse substances, to change their behaviour their behaviour and reduce the risk of them re-offending</p>

2011/2014 Action Plans

Priority 5 – Reduce the harm that substance misuse causes to communities, families and individuals

How will we measure success ?

Outcome 1 : Our area is a safe place to live work and visit (reducing crime)			
Strategic priority	Flintshire priority	Wrexham priority	Indicator
Reduce the harm that substance misuse causes to communities, families and individuals	MEDIUM	MEDIUM	Achieve a waiting time of not more than 10 working days between assessment and treatment. % of young people referred from Youth Justice Service commencing an agreed care plan no later than 10 working days from completion of the assessment.

Where are we now ?

- Co-ordination of the work to tackle and reduce substance misuse in Flintshire and Wrexham is undertaken by the respective Substance Misuse Action Teams (SMAT). Each SMAT has a local commissioning strategy based on the Welsh Government's ten year substance misuse strategy "Working Together to Reduce Harm"
- Both Flintshire and Wrexham have been achieving the national targets over the period of the last plan.

2011/2014 Action Plans

Priority 5 – Reduce the harm that substance misuse causes to communities, families and individuals

Preventing harm

By March 2014 we will	Indicator	Flintshire Baseline 2010/11	Wrexham Baseline 2010/11	Key actions
... help children & young people resist, reduce or delay substance misuse by educating them of the damage that it can cause to their health, their families and the wider community	Number of young people attending substance misuse education activities	6490	TBC	We will commission and performance manage services to deliver a range of education and early intervention initiatives to young people

2011/2014 Action Plans

Priority 5 – Reduce the harm that substance misuse causes to communities, families and individuals

Tackling availability and protecting individuals

By March 2014 we will	Indicator	Flintshire Baseline 2010/11	Wrexham Baseline 2010/11	Key actions
... reduce the inappropriate availability of alcohol to young people	Percentage of test purchases undertaken by young people working with Trading Standards which result in a sale	TBC	12% ⁵ (33%) ⁶	<p>We will support licensing enforcement and education activity focused on reducing underage sales of alcohol at on and off licences and proxy purchasing</p> <p>We will promote and support educational campaigns to target proxy sales, and other forms of inappropriate supply of alcohol to young people</p>

⁵ Off sales

⁶ On sales

2011/2014 Action Plans

Priority 5 – Reduce the harm that substance misuse causes to communities, families and individuals

Supporting substance misusers

By March 2014 we will	Indicator	Flintshire Baseline 2010/11	Wrexham Baseline 2010/11	Key actions
... support substance misusers through the provision of effective treatment and other services	% waiting no more than 10 working days waiting time between referral and assessment.	79.8%	57%	We will commission and performance manage services to deliver a range of interventions including, where appropriate, advice and information, drop-ins, day care, residential rehabilitation, recovery, after care and support services.
	% waiting no more than 10 working days waiting time between assessment and treatment.	96.4%	97.3%	

2011/2014 Action Plans

Priority 5 – Reduce the harm that substance misuse causes to communities, families and individuals

Supporting families

By March 2014 we will	Indicator	Flintshire Baseline 2010/11	Wrexham Baseline 2010/11	Key actions
... reduce the risk of harm to children and adults as a consequence of a parents, partners or child's substance misuse	the number of young people who access the service	TBC	TBC	We will commission and performance manage services to deliver a range of support to young carers, siblings and families of substance misusers

2011/2014 Action Plans

Priority 6 – Tackle hate related crime and disorder and encourage reporting

How will we measure success ?

Outcome 1 : Our area is a safe place to live work and visit (reducing crime)			
Strategic priority	Flintshire priority	Wrexham priority	Indicator
Tackle hate related crime and disorder and encourage reporting	MEDIUM	MEDIUM	Total number of hate related crimes and incidents reported

Where are we now ?

- A key part of the approach to tackling hate related crime is to increase victim's confidence in, and access to, reporting. Wrexham CSP has worked with colleagues in Community Cohesion to improve reporting over a number of years; supporting victims of hate crime and dealing with perpetrators. This has led to an increase in incidents reported by these means and also of cases with a co-ordinated multi-agency response
- Flintshire has a lower rate of hate crime reporting to police than its most similar partnerships, while Wrexham's rate of reporting is higher than the most similar partnerships average.

2011/2014 Action Plans

Priority 6 – Tackle hate related crime and disorder and encourage reporting

Hate crime

By March 2014 we will	Indicator	Flintshire Baseline 2010/11	Wrexham Baseline 2010/11	Key actions
.... increase the confidence that victims have to report hate crimes	Total number of hate related crimes and incidents reported	52	103 (54) ⁷	<p>We will continue to participate in strategic planning and operational activity to improve community cohesion, support victims of hate crime and deal with perpetrators.</p> <p>We will work to increase opportunity and accessibility for victims to report hate crime at third party reporting centres in Wrexham and through promotion of 'Safer Wales' in Flintshire⁸</p> <p>We will continue to support community cohesion teams to deliver targeted campaigns and publicity aimed at increasing awareness, supporting victims and bringing perpetrators to justice</p>

⁷ 54 cases were reported to Third Party Centres in Wrexham between Jan and Dec 2010 in addition to those reported to the police

⁸ Third Party Reporting Centres are community venues at which to report hate crime and 'Safer Wales' is an anti-hate crime project to encourage and enable victims to report abuse.

2011/2014 Action Plans

Priority 7 – Engage with the community to provide re-assurance and public confidence

How will we measure success ?

Outcome 2 : Our area feels like a safe place to live work and visit

Strategic priority	Flintshire priority	Wrexham priority	Indicator
Engage with the community to provide re-assurance and increase public confidence	HIGH	HIGH	% respondents to NWP “confidence survey” who consider crime is being dealt with by police & their local council

Where are we now ?

- Between 2008 and September 2009 however, the BCS showed concern about ASB falling from over 11% to 9%, concern about drug use falling from 27% to 18% and perceptions of drunk and rowdy behaviour remaining steady around 22% to 23%.
- However, despite continued reductions in crime and anti social behaviour between 2009 and 2010, the British Crime Survey (BCS) for North Wales showed that between September 2009 and September 2010,
 - the percentage of people concerned about ASB in their area increased from 9% to 11%,
 - those concerned about drug use and dealing rose from under 18% to 21%, and
 - those concerned about drunk and rowdy behaviour rose from under 22% to over 27%.

2011/2014 Action Plans

Priority 7 – Engage with the community to provide re-assurance and public confidence

Community re-assurance

By March 2014 we will	Indicator	Flintshire Baseline 2010/11	Wrexham Baseline 2010/11	Key actions
... develop, implement, monitor and review a programme of public re-assurance	% of respondents to North Wales Police local confidence survey who believe that crime and anti-social behaviour is being dealt with by the police and their local council	83%*	87%*	Co-ordination of key campaigns in response to issues identified by the CSP action groups. For example, seasonal campaigns and operational campaigns to highlight key issues and support crime reduction initiatives and reinforce positive messages about safety in the area. Develop, implement, monitor and review a programme of community consultation and engagement. Including public access to CSP information; community networks; Web based communications and involving the community in CSP campaigns and consultation exercises.
... continue to develop a community which is resilient to violent extremism	Not applicable	N/A	N/A	Develop, implement, monitor and review the local application of the "Prevent" element of the Government's anti-terrorism strategy in line with Home Office Guidance

⁹ December 2010 North Wales Police local public confidence survey

Delivering a safer community

Flintshire & Wrexham Community Safety Partnerships

Community Safety Partnerships (CSP) are the overarching statutory bodies responsible for tackling crime and disorder. The Partnerships meet on a quarterly basis to set the local strategy and priorities, monitor performance, and recommend allocation of funding.

To support the partnerships in the delivery of the strategy, a number of strategic and action groups are in place, including specific cross-boundary multi-agency initiatives, that focus on the identified priorities.

The Community Safety Partnerships continue to work closely at the strategic level across a number of issues such as reoffending and substance misuse.

Both partnerships are committed to increased collaboration and a willingness to seek further opportunities for joint working within the context of current sub-regional and regional developments in North Wales.

Community Safety Teams

Each local authority area has a dedicated Community Safety Team to support the work of their CSP in developing, co-ordinating, implementing and monitoring the local strategy and action plans. The inter-agency teams include staff from the local authority, police, as well as staff who are funded by the Welsh Government and Home Office

Working in partnership

Community safety issues overlap and link to many aspects of agency, department, and organisation business. This is reflected in Section 17 of the Crime & Disorder Act 1998 (and maintained in subsequent amendments)

“It is the duty of each authority to exercise its various functions with due regard to the likely effect on, and the need to do all that it reasonably can to prevent

(a) crime and disorder in its area (including anti-social and other behaviour adversely affecting the local environment);

and

(b) the misuse of drugs, alcohol and other substances in its area.”

The work of a CSP demands effective joint working across and between partner agencies. A key aspect of the Community Safety Team work is promoting co-ordinated working and liaison with Council departments, partner agencies and other relevant multi agency groupings and key strategic partnerships both within and across local authority boundaries to achieve the outcomes identified in this document.

Delivering a safer community

Fig 1 Flintshire Community Safety Partnership Groups

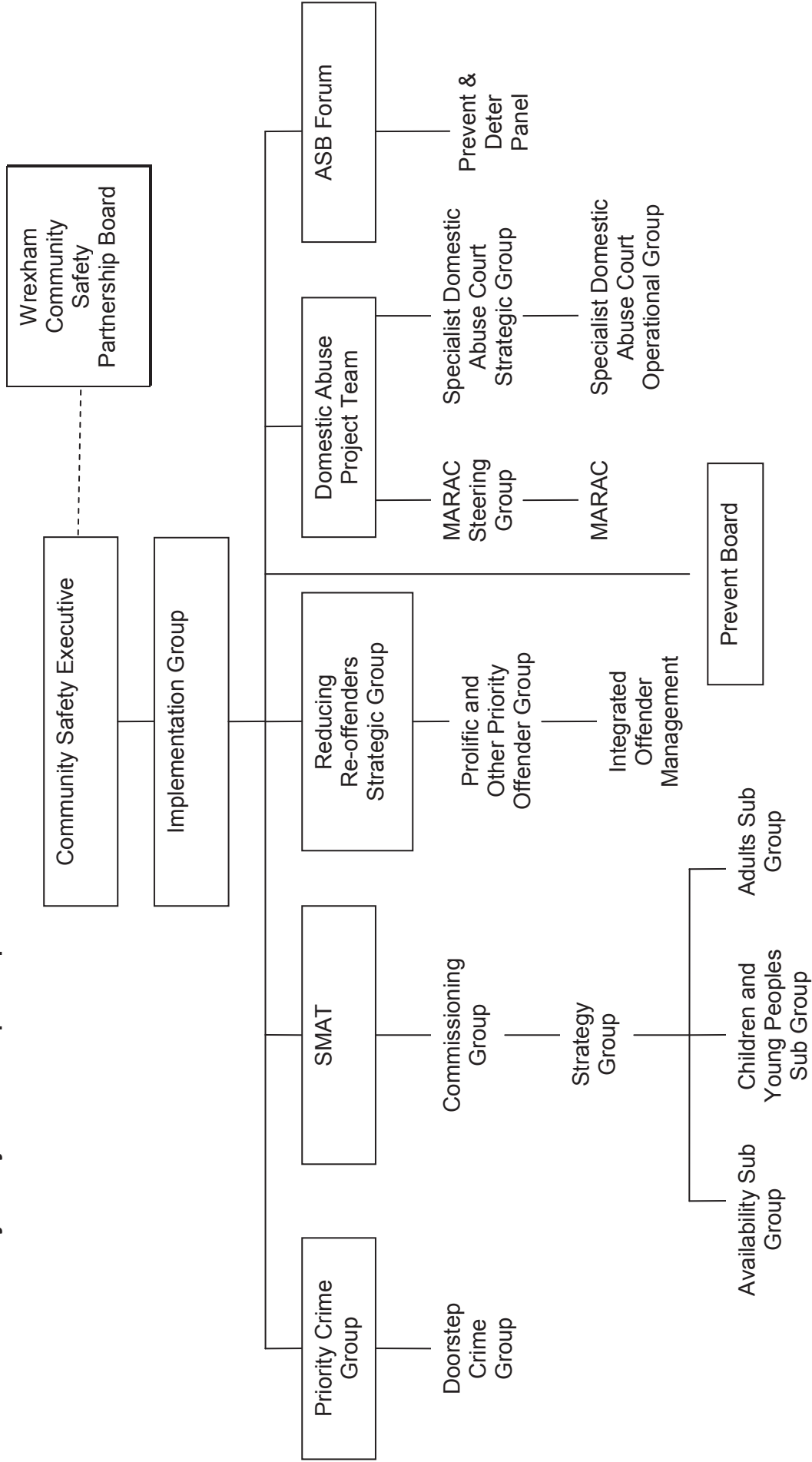
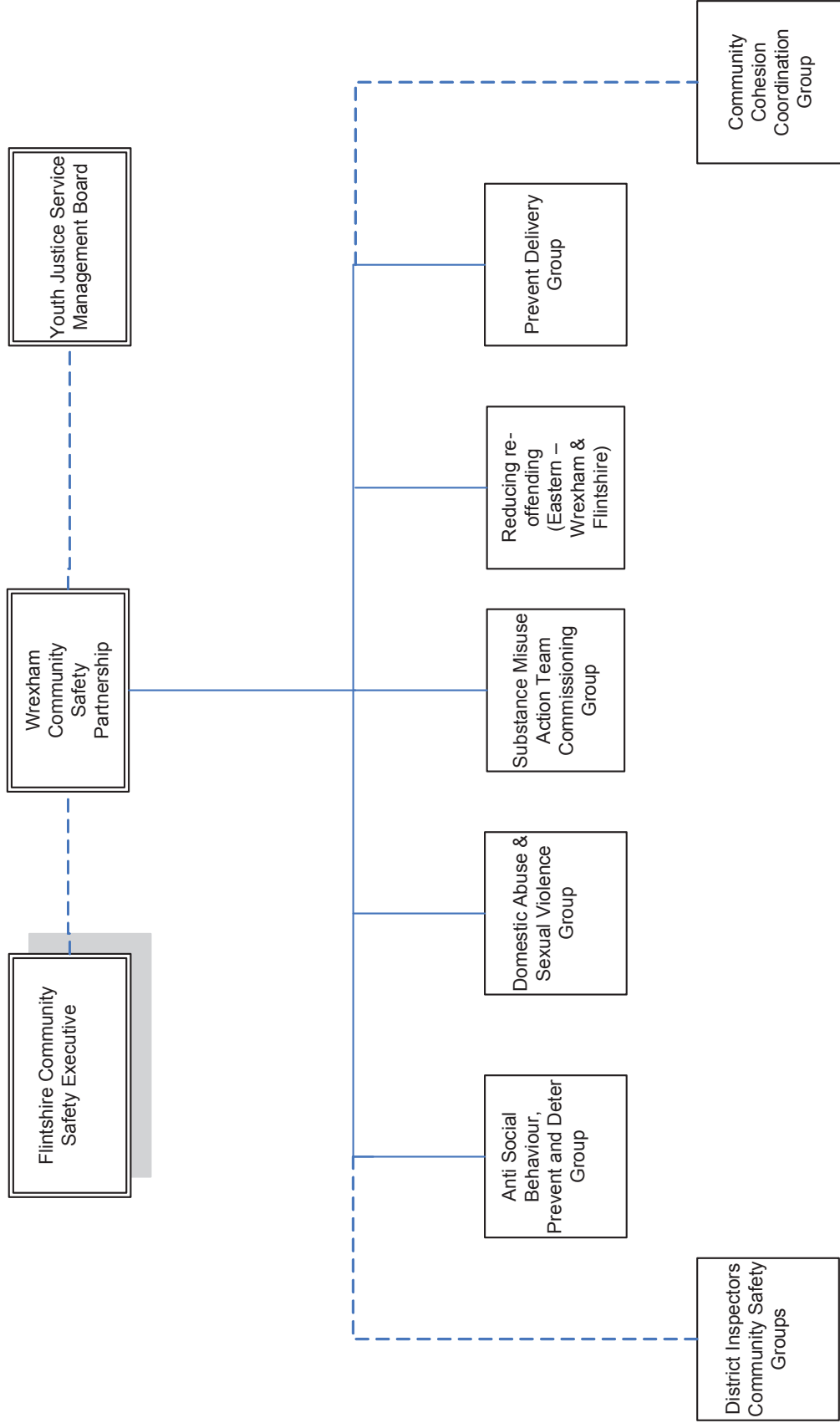


Fig 2 Wrexham Community Safety Partnership Groups



Delivering a safer community

Conclusion

This plan sets out Flintshire and Wrexham Community Safety Partnerships' shared strategic priorities - they reflect local concerns affecting both our communities and address national requirements.

Our Partnership Plan is supported by a robust Performance Management Framework, which will monitor how well the Partnerships delivers the plan and achieves the desired outcomes.

The Partnerships are also committed to monitoring joint progress to ensure achievement of desired outcomes, to reduce the levels of crime and disorder and improve community safety for those who live, work or visit Flintshire or Wrexham

FLINTSHIRE COUNTY COUNCIL

REPORT TO: **COMMUNITY PROFILE & PARTNERSHIPS OVERVIEW & SCRUTINY COMMITTEE**

DATE: **25 JULY 2013**

REPORT BY: **MEMBER ENGAGEMENT MANAGER**

SUBJECT: **FORWARD WORK PROGRAMME**

1.00 PURPOSE OF REPORT

1.01 To consider the Forward Work Programme of the Community Profile & Partnerships Overview & Scrutiny Committee.

2.00 BACKGROUND

2.01 Items feed into a Committee's Forward Work Programme from a number of sources. Members can suggest topics for review by Overview & Scrutiny Committees, members of the public can suggest topics, items can be referred by the Cabinet for consultation purposes, or by County Council, or Directors. Other possible items are identified from the Cabinet Work Programme and the Strategic Assessment of Risks & Challenges.

2.02 In identifying topics for future consideration, it is useful or a 'test of significance' to be applied. This can be achieved by asking a range of questions as follows:

1. Will the review contribute to the Council's priorities and/or objectives?
2. Are there issues of weak or poor performance?
3. How, where and why were the issues identified?
4. Do local communities think the issues are important and is there any evidence of this? Is there evidence of public dissatisfaction?
5. Is there new Government guidance or legislation?
6. Have inspections been carried out?
7. Is this area already the subject of an ongoing review?

3.00 CONSIDERATIONS

3.01 Overview & Scrutiny presents a unique opportunity for Members to determine the Forward Work Programme of the Committees of which they are members. By reviewing and prioritising the forward work programme Members are able to ensure it is member-led and includes the right issues. A copy of the Forward Work Programme is attached at Appendix 1 for Members' consideration which has been updated following the last meeting.

3.02 The RNLI Flint branch have indicated that they are happy to attend a meeting of the committee and give a presentation on their work. However, they would be unable to attend a Monday meeting. Therefore, following consultation with the Chair, the 23rd September meeting has been postponed to Thursday, 3rd October.

3.03 A verbal up date on the scrutiny of designated persons will be provided at the meeting.

4.00 RECOMMENDATIONS

4.01 That the Committee considers the draft Forward Work Programme attached as Appendix 1 and approves/amends it as necessary.

5.00 FINANCIAL IMPLICATIONS

None as a result of this report.

6.00 ANTI POVERTY IMPACT

None as a result of this report.

7.00 ENVIRONMENTAL IMPACT

None as a result of this report.

8.00 EQUALITIES IMPACT

None as a result of this report.

9.00 PERSONNEL IMPLICATIONS

None as a result of this report.

10.00 CONSULTATION REQUIRED

N/A

11.00 CONSULTATION UNDERTAKEN

Publication of this report constitutes consultation.

12.00 APPENDICES

Appendix 1 – Forward Work Programme

LOCAL GOVERNMENT (ACCESS TO INFORMATION ACT) 1985 BACKGROUND DOCUMENTS

None.

Contact Officer: Robert Robins
Telephone: 01352 702320
Email: robert.robins@Flintshire.gov.uk

This page is intentionally left blank

Community Profile & Partnerships Overview & Scrutiny Committee
FORWARD WORK PROGRAMME 2013/14

DATE	TOPIC	PURPOSE	RESPONSIBLE / CONTACT OFFICER
Thursday 25 th July 2013 10.00 am	Flintshire Community Safety Partnership - update	To consider progress made by the Partnership . (This meeting is considered to be a statutory crime and disorder meeting)	Chief Executive Sian Jones
Monday 23 rd September 2013 10.00 a.m.	This meeting has been postponed until Thursday, 3rd October to enable a representative from RNLI Flint to attend.		Robert Robins
Monday 28 th October 2013 10.00 a.m.			
Monday 2nd December 2013 10.00 a.m.			
Monday 20th January 2014 10.00 a.m.			

Community Profile & Partnerships Overview & Scrutiny Committee
FORWARD WORK PROGRAMME 2013/14

Monday 17th February 2014 10.00 a.m.			
Monday 24th March 2014 10.00 a.m.			
Monday 28th April 2014 10.00 a.m.			
Monday 9th June 2014 10.00 a.m.			
Monday 7th July 2014 10.00 a.m.			
	Items to be scheduled Deeside College/Coleg Cambria WLGA national overview LSB Outcome Agreement Local Partnership governance arrangements County Forum and the Charter		

Community Profile & Partnerships Overview & Scrutiny Committee
FORWARD WORK PROGRAMME 2013/14

Appendix 1

This page is intentionally left blank